



GMT MONTHLY MEMBERSHIP PROGRESS REPORT

Results as of: 2/29/2024

Multiple District 13

LOCATION: OHIO

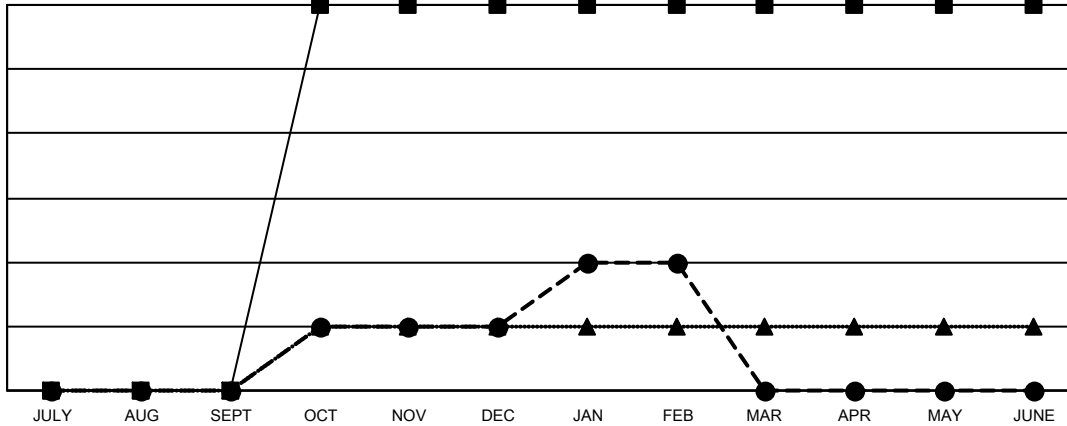
GMT: OPEN

GMT CA 1

Clubs			
RESULTS FOR 2023-2024			
QUARTER	NEW CLUB GOAL	NEW CLUBS	DROPPED CLUBS
JULY/AUG/SEPT	0	0	5
OCT/NOV/DEC	6	1	2
JAN/FEB/MAR	0	1	1
APR/MAY/JUNE	0	0	0

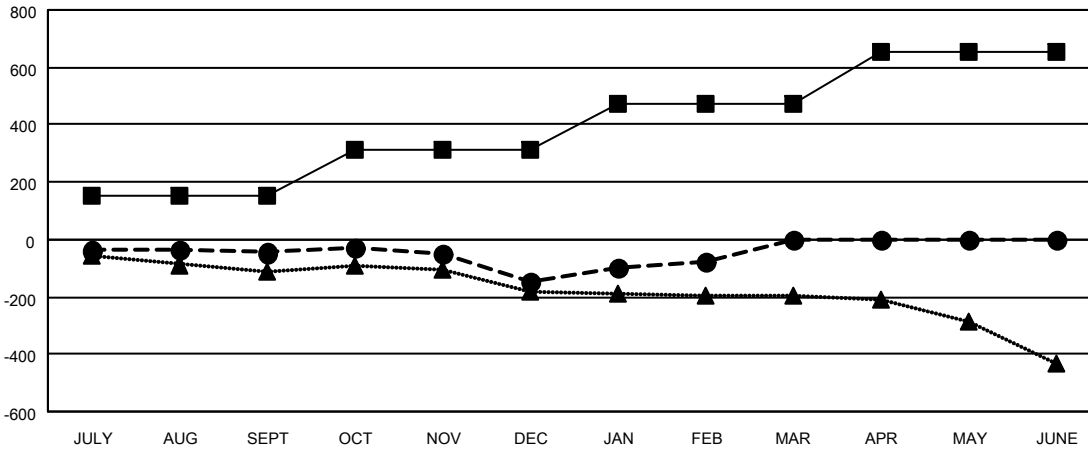
Members			
RESULTS FOR 2023-2024			
QUARTER	MEMBER GROWTH NET GOAL	MEMBER GROWTH ACTUAL	DROPPED MEMBERS ACTUAL (including transfers)
JULY/AUG/SEPT	150	221	236
OCT/NOV/DEC	162	231	317
JAN/FEB/MAR	160	212	128
APR/MAY/JUNE	184	0	0

GOALS AND ACTUAL NEW CLUBS CUMULATIVE



- - CURRENT YEAR GOALS FOR NEW CLUBS
- - CURRENT YEAR ACTUAL NEW CLUBS
- ▲ - LAST YEAR ACTUAL NEW CLUBS

GOALS AND ACTUAL MEMBERS CUMULATIVE



- - MEMBER GROWTH NET GOAL
- - MEMBER GROWTH ACTUAL
- ▲ - LAST YEAR MEMBERSHIP ACTUAL

DROPPED CLUBS: 8	
DROPPED MEMBERS	
DECEASED	120
CLUB CANCELLED	7
OTHER	554
TOTAL	681

177 CLUBS OF 362 ADDED 1 OR MORE NEW MEMBERS

GENDER DISTRIBUTION	
MALE	6,589 (68.04%)
FEMALE	3,095 (31.96%)

[CLICK HERE FOR CUMULATIVE MEMBERSHIP DATA](#)

TOTAL FAMILY UNIT MEMBERS	2,024
FAMILY MEMBERS PAYING HALF DUES	1,029